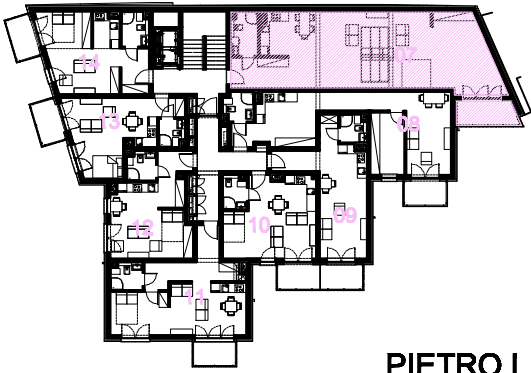
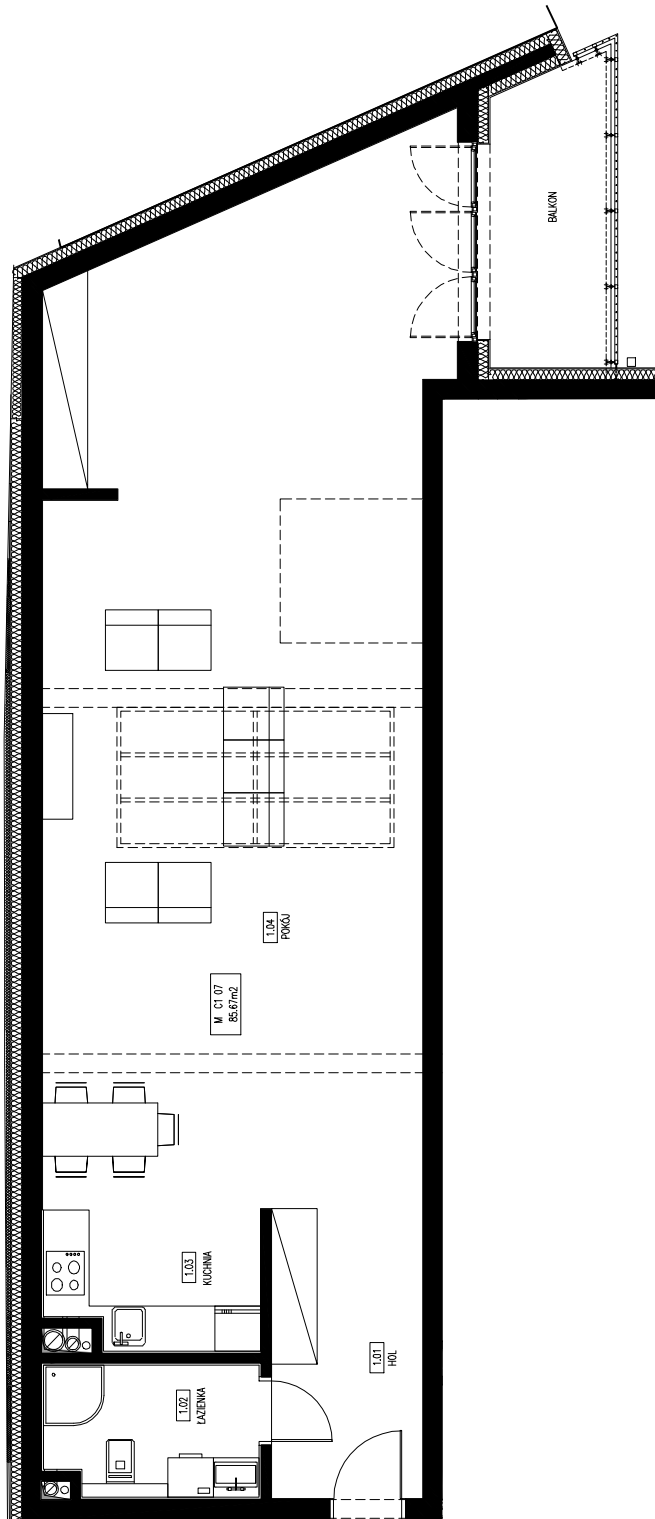


**BUDYNEK WIELORODZINNY**  
**KRAKÓW ul.ŚLISKA**  
**SEGMENT C**



**PIĘTRO I**



MIESZKANIE C 1 07		85.67
1.01	HOL	7.64
1.02	ŁAZIENKA	4.94
1.03	KUCHNIA	5.11
1.04	POKÓJ	68.00
BALKON		6.29

